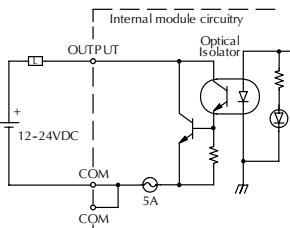
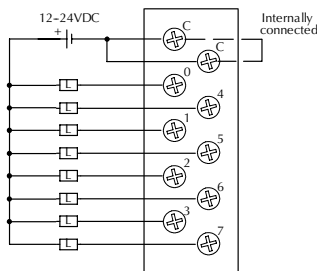
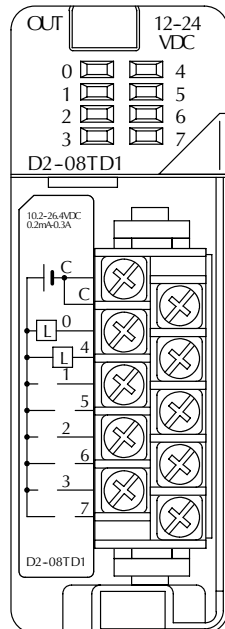
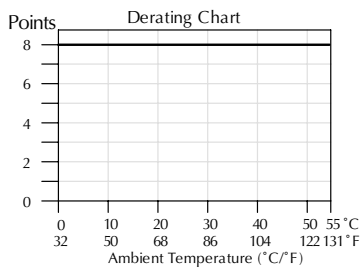


# DC Output Modules

D2-08TD1 DC Output <---->	
<b>Outputs per Module</b>	8 (current sinking)
<b>Commons per Module</b>	1 (2 I/O terminal points)
<b>Output Type</b>	NPN open collector
<b>Operating Voltage</b>	10.2-26.4 VDC
<b>Peak Voltage</b>	40 VDC
<b>ON Voltage Drop</b>	1.5 VDC maximum
<b>AC Frequency</b>	N/A
<b>Minimum Load Current</b>	0.5 mA
<b>Max Load Current</b>	0.3A/point; 2.4A/common
<b>Max Leakage Current</b>	0.1 mA @ 40 VDC
<b>Max Inrush Current</b>	1A for 10 ms
<b>Base Power Required 5VDC</b>	100 mA
<b>OFF to ON Response</b>	1ms
<b>ON to OFF Response</b>	1ms
<b>Terminal Type (included)</b>	Removable; D2-8IOCON
<b>Status Indicator</b>	Logic side
<b>Weight</b>	2.3 oz. (65g)
<b>Fuses</b>	1 per common 5A fast blow, non-replaceable

See the Terminal Blocks and Wiring section in this catalog for part numbers of **ZIPLink** cables and terminal blocks compatible with this module.



D2-08TD2 DC Output <---->	
<b>Outputs per Module</b>	8 (current sourcing)
<b>Commons per Module</b>	1
<b>Output Type</b>	PNP open collector
<b>Operating Voltage</b>	12 to 24 VDC
<b>Output Voltage</b>	10.8 to 26.4 VDC
<b>Peak Voltage</b>	40 VDC
<b>ON Voltage Drop</b>	1.5 VDC
<b>AC Frequency</b>	N/A
<b>Minimum Load Current</b>	N/A
<b>Max Load Current</b>	0.3A per point; 2.4A per common
<b>Max Leakage Current</b>	1.0 mA @ 40 VDC
<b>Max Inrush Current</b>	1A for 10 ms
<b>Base Power Required 5VDC</b>	100 mA
<b>OFF to ON Response</b>	1ms
<b>ON to OFF Response</b>	1ms
<b>Terminal Type (included)</b>	Removable; D2-8IOCON
<b>Status Indicator</b>	Logic side
<b>Weight</b>	2.1 oz. (60g)
<b>Fuses</b>	1 per common 5A fast blow, non-replaceable

See the Terminal Blocks and Wiring section in this catalog for part numbers of **ZIPLink** cables and terminal blocks compatible with this module.

