

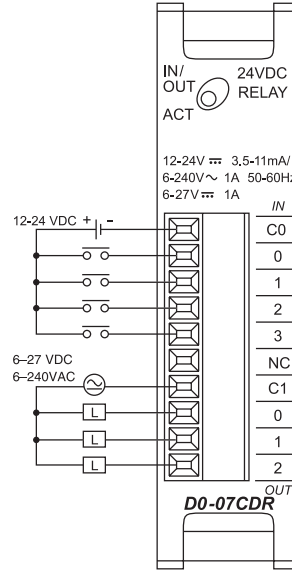
DL05/06 I/O Option Modules

D0-07CDR <--->

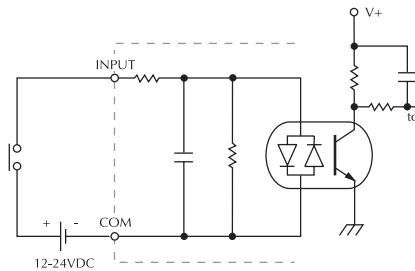
4-point DC input and
3-point relay output module

D0-07CDR Input Specifications	
Number of Inputs	4 (sink/source)
Input Voltage Range	10.8-26.4VDC
Peak Voltage	30VDC
Maximum Input Current	11mA @ 26.4VDC
Input Current	Typical: 4mA @ 12VDC 8.5mA @ 24VDC
Input Impedance	2.8K @ 12-24VDC
ON Voltage Level	> 10.0VDC
OFF Voltage Level	< 2.0VDC
Minimum ON Current	3.5ms
Maximum OFF Current	0.5ms
ON to OFF Response	2-8ms, Typical 4ms
OFF to ON Response	2-8ms, Typical 4ms
Commons	1 (4 points/common)

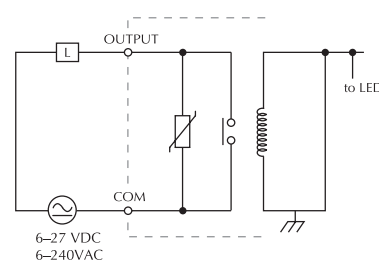
D0-07CDR Output Specifications	
Number of Outputs	3
Output Voltage Range	6-27VDC/6-240VAC
Output Type	Relay, form A (SPST)
Peak Voltage	30.0VDC/264VAC
Maximum Current (resist.)	1A/point, 4A/common
Minimum Load Current	5mA @ 5VDC
Maximum Leakage Current	0.1mA @ 264VAC
On Voltage Drop	N/A
Maximum Inrush Current	Output: 3A for 10ms Common: 10A for 10ms
Off to On Response	< 15ms
On to Off Response	< 10ms
Status Indicators	Module activity: one green LED
Commons	1 (3 points/common)
Fuse	No fuse
Base Power Required (5V)	Max. 200mA (all pts. on)



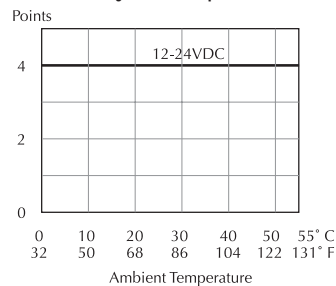
Equivalent input circuit



Equivalent output circuit



Derating chart for DC inputs



Derating chart for relay outputs

