

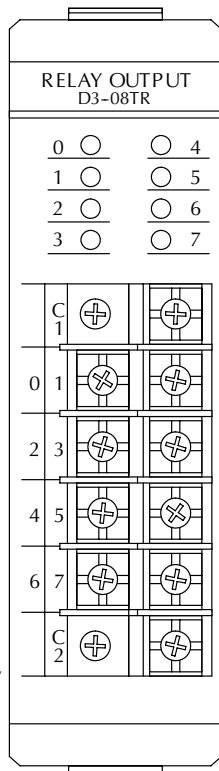
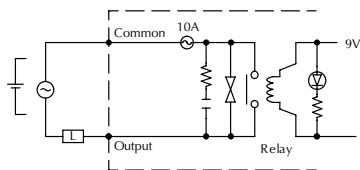
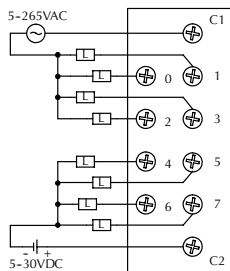
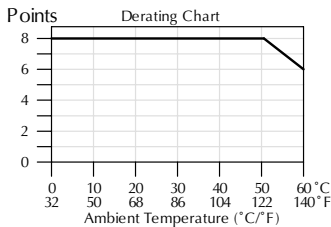
Relay Output Modules

D3-08TR Relay Output <--->	
Outputs per Module	8
Commons per Module	2 (isolated)
Operating Voltage	5-265VAC 5-30VDC
Output Type	Form A (SPST)
Peak Voltage	265VAC/30VDC
AC Frequency	47-63Hz
ON Voltage Drop	N/A
Max. Current	4A/point AC 5A/point DC 6A/common
Max Leakage Current	1mA @ 220VAC
Max Inrush Current	5A
Minimum Load	5mA @ 5V
Base Power Required	9V 45mA/ON pt. (360 mA max) 24V N/A
OFF to ON Response	5ms
ON to OFF Response	5 ms
Terminal Type	Non-removable
Status Indicators	Logic side
Weight	7oz. (200g)
Fuses	2 (one 10A per common) Order D3-FUSE-5 (5 per pack) <--->

D3-16TR Relay Output <--->	
Outputs per Module	16
Commons per Module	2 (isolated)
Operating Voltage	5-265VAC 5-30 VDC
Output Type	16 Form A (SPST)
Peak Voltage	265VAC/30VDC
AC Frequency	47-63Hz
ON Voltage Drop	N/A
Max. Current	2A/point AC/DC (resistive) 8A/common AC/DC
Max Leakage Current	0.1mA @ 220VAC
Max Inrush Current	2A
Minimum Load	5mA @ 5V
Base Power Required	9V 30mA/ON pt. (480 mA max) 24V N/A
OFF to ON Response	12ms
ON to OFF Response	12ms
Terminal Type	Removable
Status Indicators	Logic side
Weight	8.5oz. (248g)
Fuses	None

Typical Relay Life (Operations)

Voltage	Resistive	Solenoid	Closures
220VAC	4A	0.5A	100k
220VAC	0.05A	0.05A	800k
110VAC	4A	0.5A	100k
110VAC	0.1A	0.1A	650k
24VDC	5A	0.5A	100k



Typical Relay Life (Operations)

Voltage	Resistive	Solenoid	Closures
220VAC	2A	0.25A	100k
220VAC	0.03A	0.03A	800k
110VAC	2A	0.25A	100k
110VAC	0.05A	0.05A	650k
24VDC	2A	0.25A	100k

